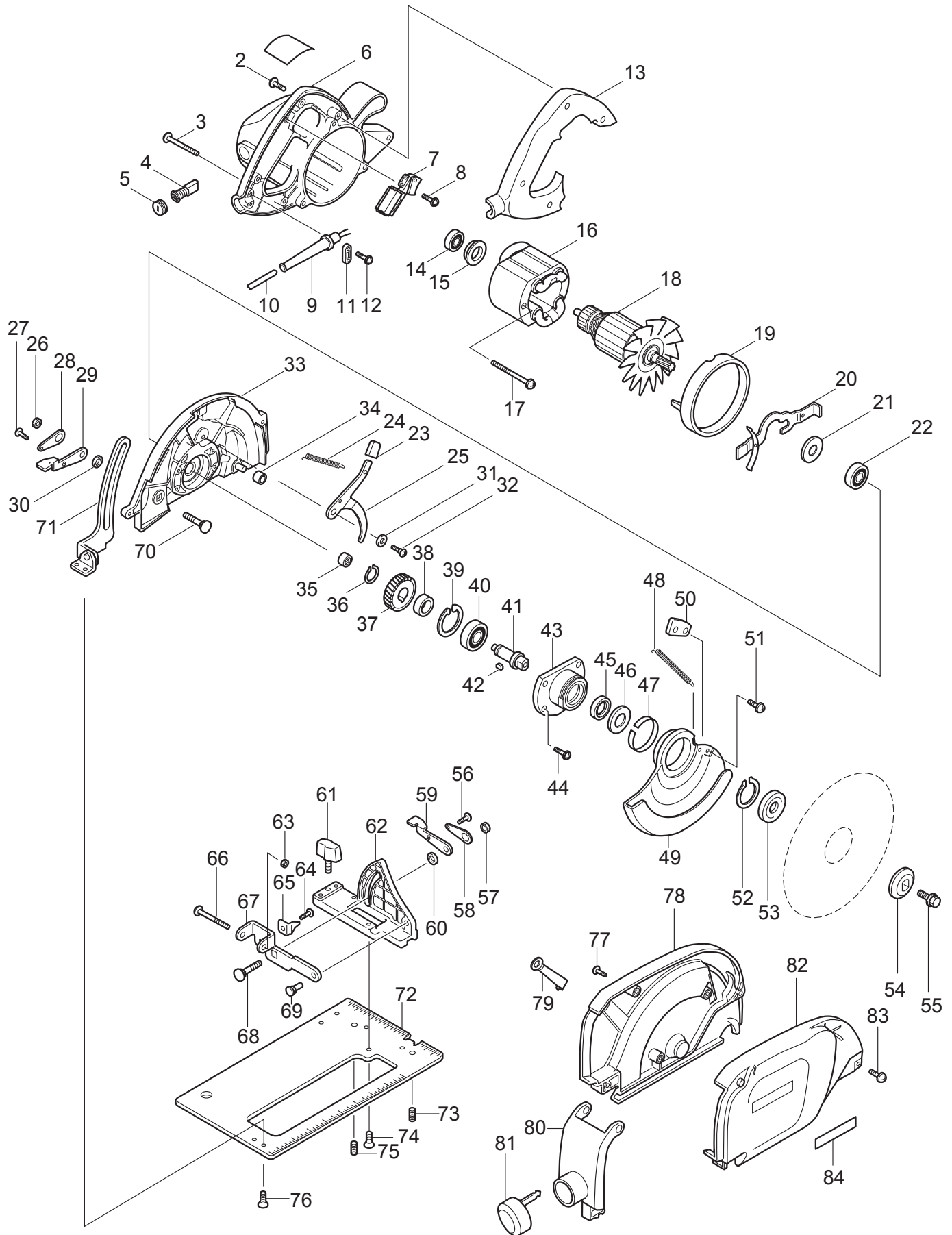




05 - 2010

5057KB

7-1/4" DUSTLESS CIRCULAR SAW



PARTS LIST

Item No	Type	Part No	Description	Qty	Unit
001		851831-8	NAME PLATE 5057KB	1	PC.
002		911148-2	PAN HEAD SCREW M4X25	4	PC.
003		911273-9	PAN HEAD SCREW M5X50	3	PC.
004	2	194986-9	CARBON BRUSH CB-154 2PC/SET W/ ORIGIN	1	SET
004	3	181047-4	CARBON BRUSH CB-154 2PC/SET W/ ORIGIN	1	SET
005		643650-4	BRUSH HOLDER CAP 6.5-13.5	2	PC.
006	2	153920-8	* MOTOR HOUSING COMPLETE	1	PC.
006	2	INC. 643660-1	* BRUSH HOLDER 6.5-13.5	2	PC.
007		651172-0	SWITCH TG933TN-1 (Comply with RoHS regulations)	1	PC.
008		266020-6	TAPPING SCREW 4X12	1	PC.
009		682505-8	CORD GUARD 10-90	1	PC.
010		664276-9	CORD W/PLUG 2P-16-5.0M,SJ	1	PC.
011	2	687063-9	* CORD CLAMP (STRAIN RELIEF)	1	PC.
012		265995-6	TAPPING SCREW 4X18	2	PC.
013	2	410201-6	HANDLE COVER	1	PC.
014		210005-4	BALL BEARING 608DDW	1	PC.
015		681625-5	INSULATION WASHER	1	PC.
016	1	636066-0	FIELD ASS'Y 115V (MC ASSEMBLY ITEM)	1	PC.
016	1	INC. 654020-2	RING TERMINAL	2	PC.
016	1	INC. 654502-4	CONNECTOR P-2 (OLD# 654553-7)	2	PC.
016	2	596066-1	FIELD ASS'Y 115V	1	PC.
016	2	INC. 654020-2	RING TERMINAL	2	PC.
016	2	INC. 654502-4	CONNECTOR P-2	2	PC.
017		266046-8	TAPPING SCREW 5X50	2	PC.
018	2	516606-9	ARMATURE ASS'Y 115V	1	PC.
018	2	INC. 241513-4	FAN 92	1	PC.
018	2	INC.	Item No. 14,15,21,22		
019		415603-1	FAN GUIDE	1	PC.
020		163113-9	SPINDLE LOCK	1	PC.
021		213102-5	DUST SEAL 12	1	PC.
022		211129-9	BALL BEARING 6201DDW	1	PC.
023		421676-4	RUBBER CAP	1	PC.
024		231823-7	TENSION SPRING 4	1	PC.
025		344759-2	OPEN LEVER	1	PC.
026		931402-8	HEX. NUT M8	1	PC.
027		911106-8	PAN HEAD SCREW M4X8	1	PC.
028		341415-5	LOCK PLATE	1	PC.
029		341416-3	LEVER PLATE	1	PC.

Item No	Type	Part No	Description	Qty	Unit
030		253766-3	FLAT WASHER 8 (OLD# 267003-9)	1	PC.
031		941201-0	FLAT WASHER 8	1	PC.
032		251267-5	SCREW	1	PC.
033	4	144023-9	* GEAR HOUSING COMPLETE	1	PC.
033	4	INC. 213459-4	* O RING 32	1	PC.
033	4	INC.	* Item No. 35		
035		212052-1	NEEDLE BEARING 1010	1	PC.
036		961055-9	* RETAINING RING S-15	1	PC.
037		226532-1	* HELICAL GEAR 39	1	PC.
038		257064-7	RING 15	1	PC.
039	2	962151-6	* RETAINING RING R-32	1	PC.
040	2	211236-8	* BALL BEARING 6002DDW	1	PC.
041		324257-2	* SPINDLE	1	PC.
042		254032-1	* WOODRUFF KEY 5	1	PC.
043	1	317187-4	* BEARING BOX	1	PC.
043	2	319405-6	* BEARING BOX	1	PC.
044		911126-2	PAN HEAD SCREW M4X16	4	PC.
045		213319-0	OIL SEAL 20	1	PC.
046	1	344758-4	* LABYRINTH RING	1	PC.
046	2	267187-3	* FLAT WASHER 16	1	PC.
047		344808-5	* THICKNESS RING (No longer used)	1	PC.
048	3	231891-0	* TENSION SPRING 4	1	PC.
049	4	319403-0	* SAFETY COVER	1	PC.
050		344760-7	SUB PLATE	1	PC.
051	2	911113-1	PAN HEAD SCREW M4X10 W/WR	2	PC.
052	1	961201-4	* RETAINING RING S-42	1	PC.
052	2	961153-9	* RETAINING RING S-45	1	PC.
053		224151-7	INNER FLANGE 40	1	PC.
054		224275-9	OUTER FLANGE 40	1	PC.
055		251644-1	HEX. FLANGE HEAD BOLT M8X20	1	PC.
056		911106-8	PAN HEAD SCREW M4X8	1	PC.
057		931402-8	HEX. NUT M8	1	PC.
058		341415-5	LOCK PLATE	1	PC.
059		341416-3	LEVER PLATE	1	PC.
060		253766-3	FLAT WASHER 8	1	PC.
061		251858-2	SCREW M6X15	1	PC.
062		317160-4	ANGULAR PLATE	1	PC.
063		252103-8	HEX. LOCK NUT M5-8	1	PC.
066		265075-8	+ P.H. SCREW M5	1	PC.

Item No	Type	Part No	Description	Qty	Unit
067	2	345491-1	* ANGULAR GUIDE (OLD# 344763-1 - N/L/A)	1	PC.
068		266227-4	CAP SQUARE NECK BOLT M8X28	1	PC.
069	2	256480-0	SHOULDER PIN 6-7	1	PC.
070		265965-5	CAP SQUARE NECK BOLT M8X24	1	PC.
071		163409-8	DEPTH GUIDE	1	PC.
072	2	319615-5	BASE	1	PC.
073	2	266213-5	H.S.SET SCREW(FLAT POINT)M5X12	1	PC.
074		912212-2	COUNTERSUNK HEAD SCREW M5X12	5	PC.
075	2	266213-5	H.S.SET SCREW(FLAT POINT)M5X12	1	PC.
076	2	265085-5	COUNTERSUNK HEAD SCREW M4X8	2	PC.
077		265995-6	TAPPING SCREW 4X18	3	PC.
078	2	158925-3	* DUST BOX L COMPLETE	1	PC.
079		344761-5	EARTH PLATE	1	PC.
080		151564-8	DUST CAP COMPLETE	1	PC.
081		421362-7	CAP	1	PC.
082	3	188823-7	* DUST BOX R SET	1	PC.
082	3	INC.	* Item No. 84		
084		819003-1	MAKITA LABEL	1	PC.
085		213621-1	* O RING 46 (Added)	1	PC.
100		654001-6	TERMINAL R1.25-3.5	2	PC.
101		652021-4	SCREW #5-40 UNCX 5	1	PC.
102		654001-6	TERMINAL R1.25-3.5	2	PC.
A01		164095-8	GUIDE RULE	1	PC.
A02		782016-4	OFFSET WRENCH 13	1	PC.
A03		A-90451	7-1/4" C.T.SAW BLADE 28T	1	PC.
C01		846603-4	CARTON F/5057KB	1	PC.
E03		253773-6	* FLAT WASHER 15 (Added)	1	PC.
E04		210149-0	* BALL BEARING 6807LLU (Added)	1	PC.
E05		911113-1	* PAN HEAD SCREW M4X10 WITH WR (Added)	1	PC.

SERVICE CHANGES: 5057KB

1. Changes on Motor Housing and Strain Relief

(TI#70783)

Item No.	Description	Type 1	Type 2
006	Motor Housing Com	151554-1	153920-8
011	Strain Relief	687001-1	687063-9

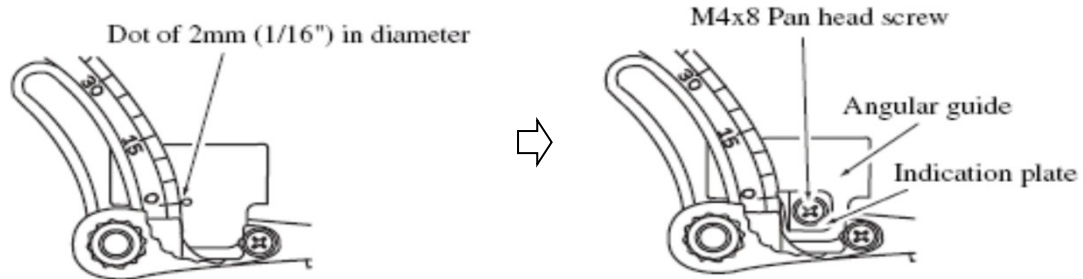
Above parts are completely interchangeable as a set.

2. Change on Angular Guide

(TI#70783)

Item No.	Description	Type 1	Type 2
065	Indication Plage	344762-3	-----
067	Angular Guide	344763-1	345491-1
064	P.H. Screw M4x8	911108-4	----

Above parts are completely interchangeable as a set.



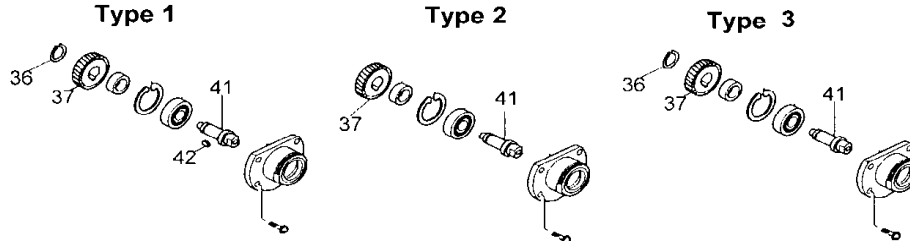
3. Change on Spindle, Helical Gear

(TI# 61849)

(TI# 64747)

Item No.	Description	Type 1	Type 2	Type 3
036	Retaining Ring	961055-9	-----	961055-9
037	Helical Gear	(N/L/A)	226532-1	
041	Spindle	323897-3	(N/L/A)	324257-2
042	Woodruff Key 5	254032-1	-----	

Above parts are completely interchangeable as a set.



4. Change on Safety Cover, Dust Box L Complete and Tension Spring 4 etc.

(T/#63599) (T/#64123) (T/#B2040)

Item No.	Description	Type 1	Type 2	Type 3	Type 4
033	Gear Housing Com.	151873-5	152926-3	153302-4	144023-9
085	O Ring 46	-----		213621-1	
034	Rubber Sleeve 6		262523-8		Incl No.33
*Type 1 and Type 2 above are interchangeable as a set. (T/#63599, Illustration A)					
049	Safety Cover	317159-9	318351-0	319309-2 (N/L/A)	319403-0
078	Dust Box L Com.	151565-6		158925-3	
048	Tension Spring 4	231806-7	231828-7		231891-0
082	Dust Box R Set	183105-2		188823-7	
083	P.H.Screw M5x40	911263-2		-----	
**Item# 44,78,48 Type 1 and Type2 are interchangeable as a set. (T/#83667, Illustration B)					
***Item # 78, 82 and 83 Type 2 and Type 3 are interchangeable as a set. (Illustration C)					
E03	Flat Washer 15	N/A	N/A	N/A	253773-6
039	Retaining Ring R-35 > 32		962153-2		962151-6
040	Ball Bearing 6202DDW > 6002DDW		211228-7		211236-8
043	Bearing Box		317187-4		319405-6
046	Labyrinth Ring > Flat Washer 16		344758-4		267187-3
047	Thickness Ring		344808-5		N/A
052	Retaining Ring S-42 >35		961201-4		961153-9
E04	Ball Bearing 6807LLU		-----		210149-0
E05	PH Screw M4X10		-----		911113-1

Type 3 and Type 4 all above are completely interchangeable as a set. (T/#B2040, Illustration D)

Illustration A: TYPE1 --> TYPE2 (T/# 63599)

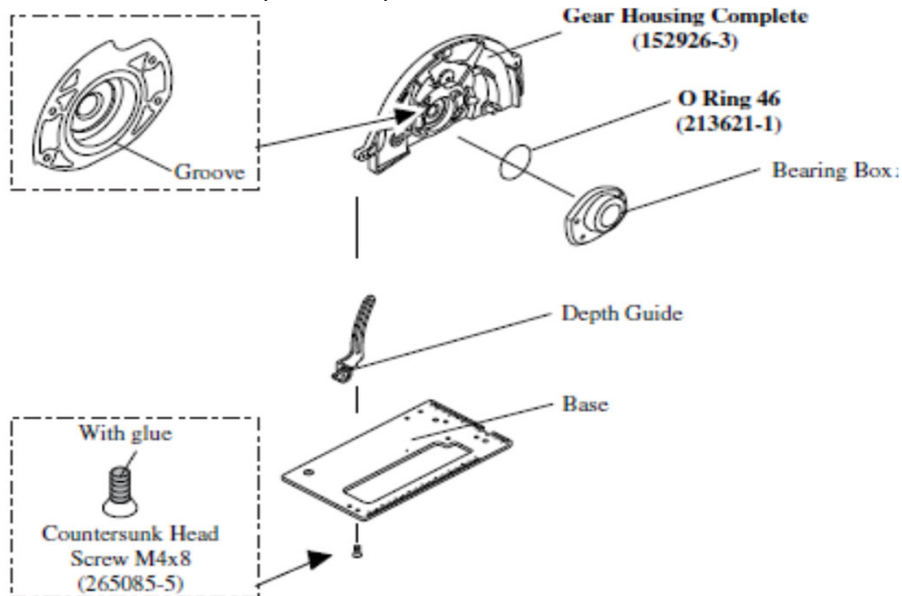


Illustration B: TYPE1 --> TYPE2 (T/# 83667)

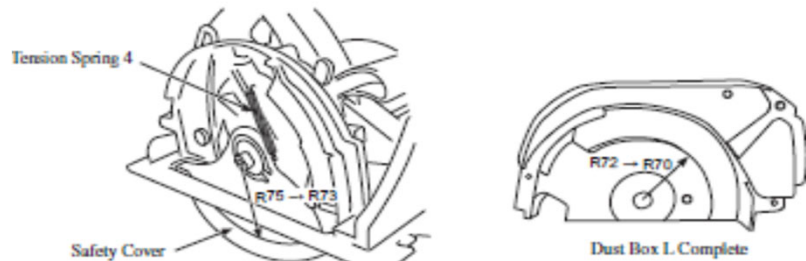
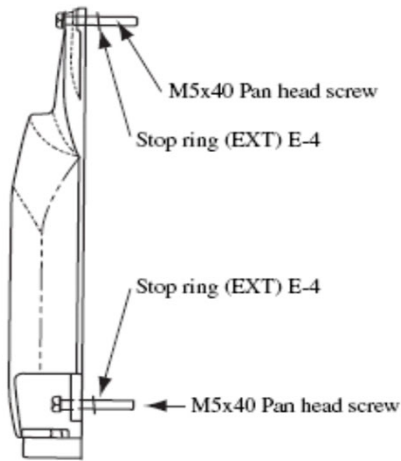
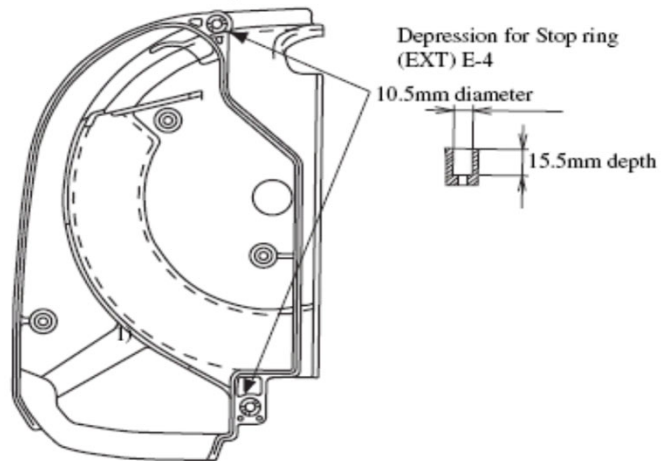


Illustration C: TYPE2 --> TYPE3

1) New Dust box R set



2) New Dust box L complete



When assembling new Dust box R set to current Dust box L complete, remove two Stop rings (EXT) E-4 from two M5x40 Pan head screws.

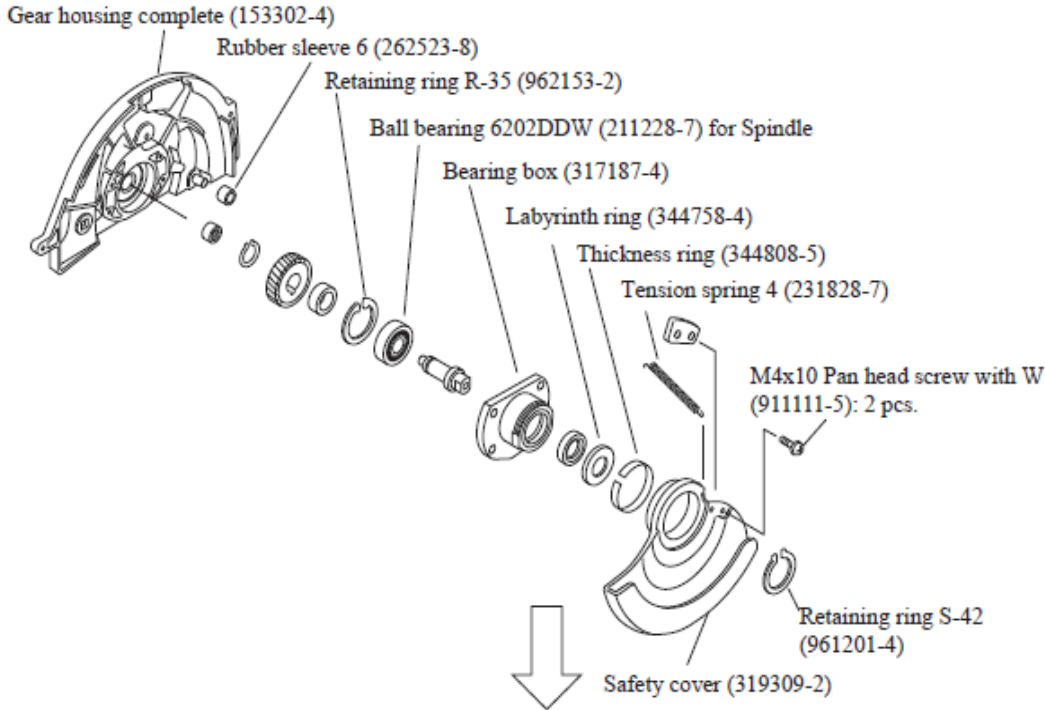
To comply with the revision of standards:

1) Stop ring (EXT) E-4 (2pcs.) have come into use as the stopper of M5x40 P.H.Screw (2pcs) for Dust box R set. New Dust box R set includes M5x40 Pan head screws and Stop rings (EXT) E-4.

When new Dust box R set is removed for replacement of Saw blade, the M5x40 P.H.Scrws are attached to the Dust box R set.

2) Upper portions over the threaded holes of Dust box L complete have been modified to pass Stop ring (EXT) E-4

Illustration D: TYPE3 --> TYPE4



Gear housing complete (144023-9): changed for gluing Rubber sleeve 6 (262523-8) as the integral part

